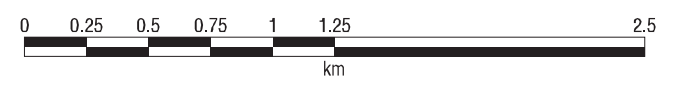


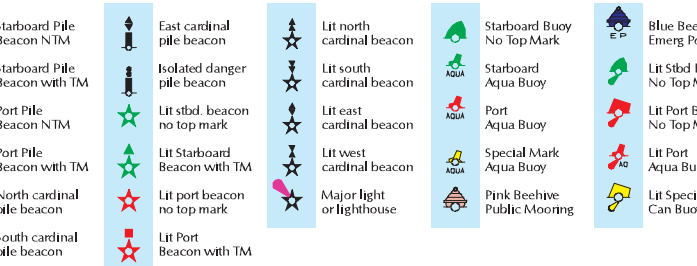
MAP OF Brisbane Water and Terrigal Haven Area



Restricted Waters



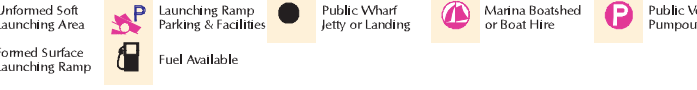
Navigation Aids



Restricted Activities and Cautions



Boating Facilities



General Information



DISCLAIMER! This map is not intended to be used for navigational purposes and NSW Maritime takes no responsibility for the accuracy of the content herein. Map Printed: November 2004. Copyright NSW Maritime Authority. The local office of NSW Maritime is situated at: 131 Donnan Street, Gosford NSW 2250. Telephone: 4323 7171.



WARNING: OVERHEAD AND SUBMARINE CABLES AND PIPES CROSS THESE WATERWAYS AT VARIOUS LOCATIONS AND ARE USUALLY INDICATED BY WARNING NOTICES ON THE SHORE. CAUTION SHOULD BE EXERCISED AT ALL TIMES WHILE NAVIGATING IN THE VICINITY OF THESE CROSSINGS.

Caution: A number of small yellow 'aqua' buoys used as Yacht Rounding Marks exist at various locations within Brisbane Water.

Note: Lights 161, 162 & 163 are sectored.

See Nautical Chart AUS.216 for further information.

Caution: Some Channels shown on this side can be shallow at low tides.

Woy Woy Bridges clearances: Road 2.7 metres, Rail 2.5 metres.

Terrigal 7km. SEE INSET 1.

Punt Bridge clearance 3.25m.

Caution: Launching Ramps on this side can be shallow at low tide.

Caution: Low overhead cables in this area.

Note: Bridge clearance heights shown in RED are in metres above mean high water.

Note: Most navigation aids shown hereon exhibit a 3 digit identifying number. Please use this number to report faulty navigaids or your position in an emergency.

Note: Lit navigaids exhibit standard flash patterns, unless otherwise indicated.

See Note: GPS* Navig. Port Pile Beacon numbered 107 off Kourang Gouang Pt. 33 deg. 31.284 min. S 151 deg. 20.668 min. E

CAUTION: The entrance to Brisbane Water is encumbered by sandbanks upon which heavy breakers occur in south winds.

NOTE: Vessels entering from seaward, should keep to eastern shore from Little Box Head to Wagstaff Point.

See Nautical Charts AUS 215, 216 217 & 204 for further information.

Note: No landing on Lion Island without a permit.

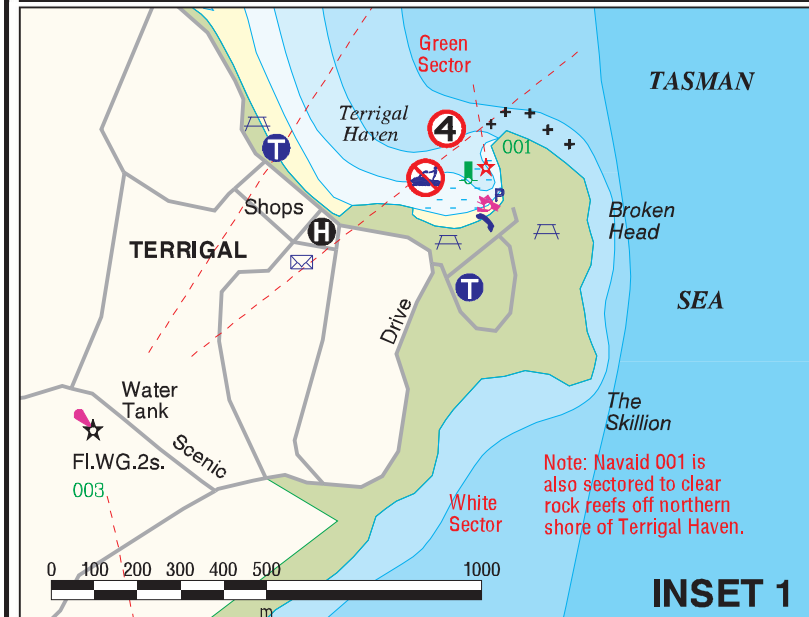
Smooth Water Plying Limit for vessels over 7.5m and Sailing vessels over 7.5m fitted with an approved motor.

Note: Global Positioning System check point as shown by GPS* is in WGS 84 co-ordinates to an accuracy of +/- 5 metres. Equipment should be checked against this point to determine any gross errors prior to any seaward journey. Depending on equipment, errors of up to 100 metres is not uncommon.

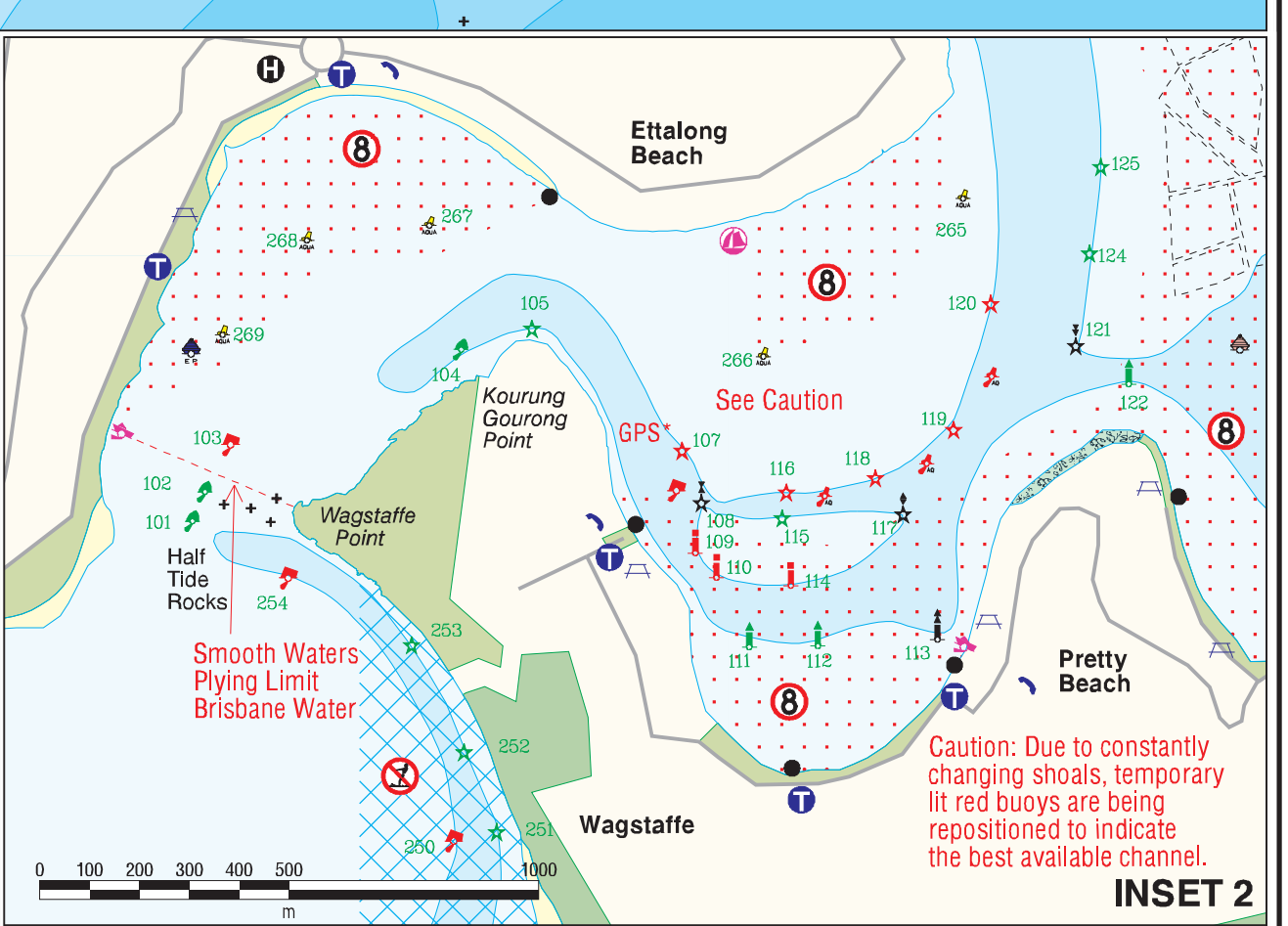
BOUDDI MARINE PARK Phone Fisheries on (02)9566-7802 for further information.

Warning: Bomboras can break at anytime at various locations along the coast. Extreme caution should be exercised whilst navigating in the vicinity of any bomboras, snail or reel.

Caution: Due to constantly changing shoals, temporary lit red buoys are being repositioned to indicate the best available channel.



INSET 1



INSET 2